



£319,999

THE IKON IS A CONTEMPORARY AND ICONIC PARK HOME WITH DESIGN FLAIR AND QUALITY THROUGHOUT

The exterior styling and floor plan of its predecessor benefits from a new contemporary colour scheme with vibrant accent colours that are seen in the lounge footstools and kitchen splashback are available in a number of colour options, so whatever your taste, the Ikon can be tailored to fit! To the exterior, long slender windows, French doors (to the lounge), feature cladding detail and a central dormer framing a feature front door all come together to create a modern and sleek look.

- Nova style lounge suite with footstools
- Double bedrooms with fitted furniture
- Two large skylights to kitchen area
- Chrome curved heated towel rails



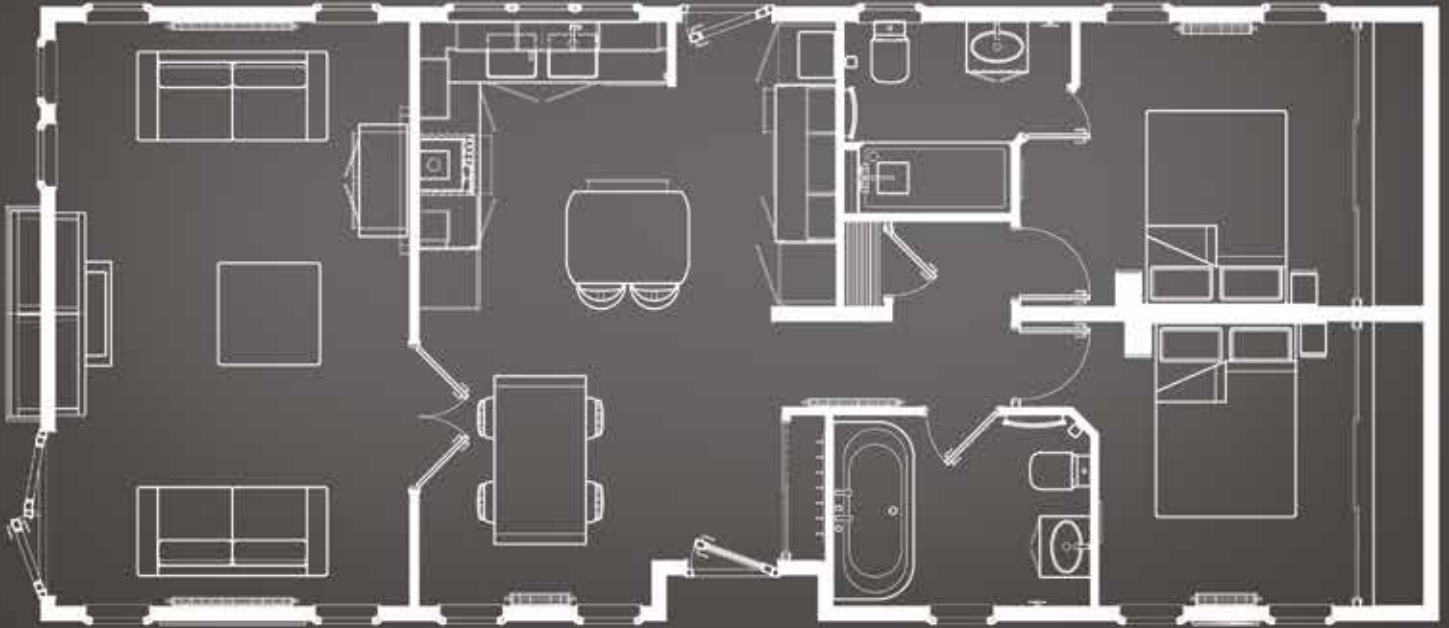
011897 30999

info@victoria-gardens.co.uk

www.victoria-gardens.co.uk



45x20 | 2 BEDROOMS



- Built to BS 3632
- Pitched tiled roof
- PVCu double glazing
- Gas central heating
- Fitted furniture

THE MODERN CHIC INTERIOR CREATES THE PERFECT SPACE TO RELAX AND UNWIND

The layout, which includes a central kitchen/diner with a lounge separated by double doors, provides the option to open up the living space or to have separate rooms. High gloss doors with aircraft style top-lockers, two skylights and a large breakfast island make a bold statement in the spacious fitted kitchen with integrated appliances.

011897 30999

info@victoria-gardens.co.uk

www.victoria-gardens.co.uk

