



£349,999

TOP-OF-THE-RANGE HOME WITH A DISTINCTIVE EXTERIOR  
COMPLEMENTED BY A LUXURIOUS INTERIOR

The exterior features an extended front dormer supported by fluted pillars and the interior has stunning interior design and a choice of intelligent floor layouts. With a spacious fitted kitchen designed to accommodate everything you could need and a bathroom and wet room that spell pure luxury, this home sets new standards in kitchen and bathroom design. The kitchen includes a range cooker with black glass splashback and matching chimney hood, cream American fridge-freezer and a stylish Belfast sink.

- Feature fireplace with coal effect
- French doors to the dining area
- Fully integrated appliances
- Built to BS 3632



011897 30999

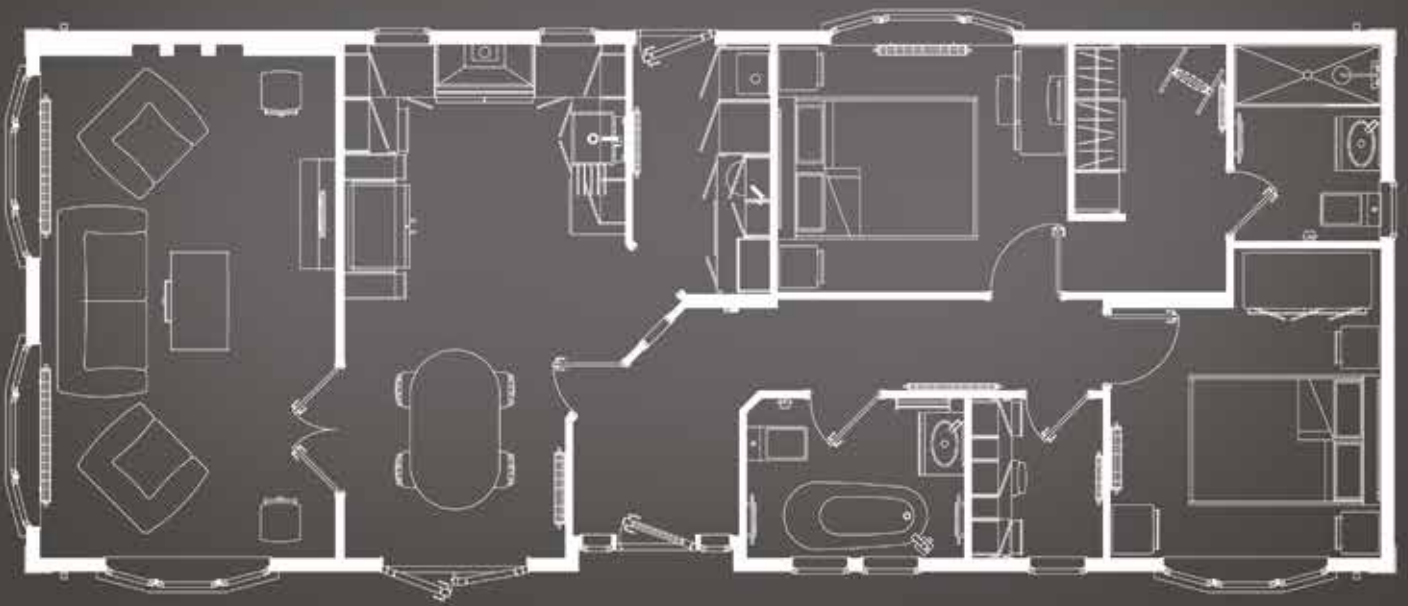
info@victoria-gardens.co.uk

www.victoria-gardens.co.uk





# 50x20 | 2 BEDROOMS



- Bentley Designs
- Fully fitted light acacia study
- Double bedrooms
- En-suite bathroom
- Luxury free-standing bath

**THE HERITAGE IS A STUNNING AND OUTSTANDING HOME WITH A BEAUTIFULLY FURNISHED AND SPACIOUS INTERIOR**

The bathroom includes an indulgent free-standing bath with waterfall tap and the beautiful bedroom even has its own en-suite and dressing room - these are just a few of the features that this impressive home has to offer.

011897 30999

info@victoria-gardens.co.uk

www.victoria-gardens.co.uk

